

РОССИЙСКАЯ АКАДЕМИЯ НАУК
Южный Научный Центр

RUSSIAN ACADEMY OF SCIENCES
Southern Scientific Centre



Кавказский Энтомологический Бюллетень

CAUCASIAN ENTOMOLOGICAL BULLETIN

Том 7. Вып. 2

Vol. 7. No. 2



Ростов-на-Дону
2011

A new species of *Lesteva* Latreille, 1797 (Coleoptera: Staphylinidae: Omaliinae) from Greece and Turkey

Новый вид рода *Lesteva* Latreille, 1797 (Coleoptera: Staphylinidae: Omaliinae) из Греции и Турции

A.V. Shavrin
А.В. Шаврин

Institute of Systematic Biology, Daugavpils University, Vienibas, 13, Daugavpils LV-5401 Latvia. E-mail: ashavrin@hotmail.com
Институт биологической систематики, Даугавпилсский университет, Виенибас, 13, Даугавпилс LV-5401 Латвия.

Key words: Coleoptera, Staphylinidae, Omaliinae, *Lesteva*, Greece, Turkey, new species.

Ключевые слова: Coleoptera, Staphylinidae, Omaliinae, *Lesteva*, Греция, Турция, новый вид.

Abstract. *Lesteva schillhammeri* sp. n. from Thasos island (Greece) and the Turkish provinces of Izmir and Denizli is described and illustrated. The aedeagus of the similar species *L. albanica* Bernhauer, 1936 is illustrated for comparison.

Резюме. Приведено иллюстрированное описание нового вида *Lesteva schillhammeri* sp. n. с острова Фасос (Греция) и из провинций Измир и Денизли (Турция).

Introduction

In the course of the study of the Western Palaearctic material of the genus *Lesteva* Latreille, 1797, a new species was discovered from Greece and western Turkey. The aedeagus of the new species is similar to that of *L. albanica* Bernhauer, 1936 (= *balcanica* Scheerpeltz, 1937), known from Albania, Bulgaria and Cyprus according to Bernhauer [1936: 6], Scheerpeltz [1937: 191] and Coiffait [1970: 64], *L. aterrima* Lohse, 1967, known from the Alps according to Lohse [1967: 10], *L. benicki* Lohse, 1958 described from Asturias [Lohse, 1958: 51], and the recently described *L. martinae* Zanetti, 2008 from Central Italy [Zanetti, 2008: 993].

Material and methods

The examined material is deposited in: NMW – Naturhistorisches Museum Wien, Vienna, Austria (H. Schillhammer), CA – private collection of V. Assing, Hannover, Germany.

Morphological studies were carried out using Zeiss Discovery V8 and Zeiss Discovery V12 stereomicroscopes. A digital camera (Sony Alpha DSLR-A300) was used for the photographs and all figures were enhanced using Adobe Photoshop software. All measurements are given in millimeters.

Lesteva schillhammeri sp. n.
(Fig. 1–3)

Material (original labels enclosed in quotes, lines separated by “[”]). Holotype: ♂, «TÜRKEI 1991 | leg. Schönmann | et Schillhammer / Prov. IZMIR | Yamanlar Dag | n[ear] Izmir 18.5.» (NMW). Paratypes: 1♂, «GR [GREECE] Thasos, 780 m | above Prinos | 40°44N, 24°39E | 16.X.1980

Malicky» (white label with black edges), «coll. | V. Assing | Hannover» (white label with black edges), ≠ «*Lesteva* | *albanica* | Bernh. [handwritten] | det. Zanetti 2005» (CA); 1♂, «TÜRKEI 1991 | leg. Schönmann | et Schillhammer / Prov. DENIZLI | w Akdag | Baba Dag 21.5.» (NMW).

Description. Maximum width of head including eyes: 0.6–0.7; length of head (from base of labrum to neck constriction along the head midline): 0.5–0.54; length of antenna: 2.1; longitudinal length of eye: 0.21–0.24; length of temple (from posterior margin of eye to neck constriction): 0.1–0.14; length of pronotum: 0.72–0.75; maximum width of pronotum: 0.75–0.78; minimum width of pronotum: 0.6; sutural length of elytra (length of elytra from apex of scutellum to posterior margin of sutural angle): 1.5; maximal width of elytra: 1.2–1.32; width of abdominal segment IV: 1.2–1.28; length of aedeagus: 0.7. Total length (from the base of labrum to the apex of abdomen): 3.9–4.

Habitus as in fig. 1. Head, disc of pronotum and entire abdomen brown; ocelli, edges of pronotum, elytra, legs and antennae reddish brown; mouthparts, bases of antennal segments and tarsi yellow or yellow-brown. Pubescence of head, pronotum and elytra decumbent, long, yellow; pubescence of abdomen dense, shorter, yellow.

Head 1.2 times wider than long, with rather prominent large eyes; eyes twice as long as temples; antecellar depressions deep; punctation dense, deep and evenly distributed; interstices between punctures without visible microsculpture, glossy. Antennae long and slender, reaching 1/3 length of elytra; antennal segments IV–X with similar length/width proportions; measurements of antennomeres: I: 0.22 × 0.08; II: 0.16 × 0.08; III: 0.18 × 0.04; IV–X: 0.16 × 0.08; XI: 0.26 × 0.08.

Pronotum cordate, basal angles approximately 90°, at base approximately as wide as head; punctation as on head, becoming sparser posteriorly and laterally at midlength; interstices between punctures without microsculpture, glossy.

Scutellum triangular, with several small punctures laterally, without microsculpture.

Elytra approximately twice as long as pronotum, wide and convex; punctures large, deeply impressed and densely distributed; interstices between punctures without microsculpture, glossy. Wings fully developed. Tarsomere I of metatarsus as long as tarsomeres II–IV, slightly longer than tarsomere V.

Abdominal tergites glossy, with fine transverse microsculpture, without visible punctures, tergites IV–V with paired tomentose patches.

Male. Aedeagus (fig. 2–3) long, base of bulb small, median part very narrow (if see laterally), produced forward in lateral view, in dorsal view, parallel-sided, with weakly pointed apex; parameres not reaching apex of aedeagus; endophallus with two parallel, unsclerotized structures. Aedeagus laterally (fig. 3) with deep concavity between basal bulb and base of parameres.

Female unknown.

Comparative notes. *Lesteva schillhammeri* sp. n. is most closely related to *L. albanica* based on body size,

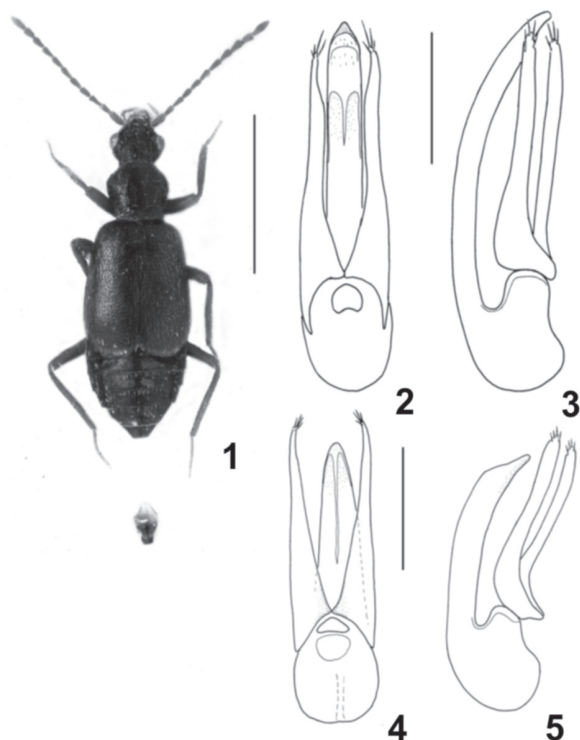


Fig. 1–5. *Lesteva* Latreille, 1797.

1–3. *Lesteva schillhammeri* sp. n. 1 – habitus, 2 – aedeagus, ventral view, 3 – aedeagus, lateral view. 4–5. *Lesteva albanica* Bernhauer, 1936. 4 – aedeagus, ventral view, 5 – aedeagus, lateral view. Scale bar: 1 – 2 mm, 2–5 – 0.2 mm.

Рис. 1–5. *Lesteva* Latreille, 1797.

1–3. *Lesteva schillhammeri* sp. n. 1 – рабитус, 2 – эдеагус, вентрально, 3 – эдеагус, латерально. 4–5. *Lesteva albanica* Bernhauer, 1936. 4 – эдеагус, вентрально, 5 – эдеагус, латерально. Масштабная линейка: 1 – 2 мм, 2–5 – 0.2 мм.

coloration and the glossy forebody, but differs in the larger temples, smaller pronotum, larger and sparser punctures of the forebody, and the longer and narrower median

lobe of the aedeagus which is differently shaped apically in lateral view (aedeagus of *L. albanica* as in fig. 4–5). In addition to *L. albanica*, other species with the small basal bulb and thin median lobe include *L. benicki* Lohse, 1958, *L. aterrima* Lohse, 1967 and *L. martinae* Zanetti, 2008. From these species, *L. schillhammeri* sp. n. differs in the body proportions, larger and more sparsely distributed punctures, the absence of microsculpture on the forebody, and in the longer, glabrous median lobe of the aedeagus.

Etymology. The species name is dedicated to my colleague Dr. Harald Schillhammer (Vienna), one of the collectors of the holotype.

Acknowledgements

I am grateful to H. Schillhammer (Vienna, Austria) and V. Assing (Hannover, Germany) for the loan of material. I am also grateful to my colleague A.J. Brunke (Ontario, Canada) for suggestions and correction of the English text of the manuscript.

The research was conducted within the framework of the European Social Fund (No2009/0206/1DP/1.1.1.2.0/09/APIA/VIAA/010).

References

- Bernhauer M. 1936. Neuheiten der palaearktischen Staphylinidenfauna // Pubblicazioni del Museo Entomologico "Pietro Rossi" Duino. 14: 5–27.
- Coiffait H. 1970. Staphylinides égéidiens // L'Entomologiste. 26: 61–68.
- Lohse G.A. 1958. Neuheiten der deutschen Käferfauna IV // Entomologische Blätter. 54: 51–58.
- Lohse G.A. 1967. Zwei neue westeuropäische Arten der Gattung *Lesteva* Latr. // Entomologische Blätter. 63: 10–12.
- Scheerpeltz O. 1937. Wissenschaftliche Ergebnisse einer von Herrn Hofrat F. Schubert, seinem Sohne Herrn cand. phil. F. Schubert und Herrn Prof. Ing. K. Mandl im Sommer 1935 (1936) nach Bulgarien unternommenen Studienreise. Coleoptera: I. Staphylinidae // Mitteilungen aus den Königlichen Naturwissenschaftlichen Instituten. 10: 185–246.
- Zanetti A. 2008. Description of *Lesteva martinae* nov. sp. from Central Italy (Coleoptera, Staphylinidae: Omaliinae) // Linzer biologische Beiträge. 40(1): 993–997.

References

- Bernhauer M. 1936. Neuheiten der palaearktischen Staphylinidenfauna. *Pubblicazioni del Museo Entomologico "Pietro Rossi" Duino*. 14: 5–27.
- Coiffait H. 1970. Staphylinides egeidiens. *L'Entomologiste*. 26: 61–68.
- Lohse G.A. 1958. Neuheiten der deutschen Kaferfauna IV. *Entomologische Blatter*. 54: 51–58.
- Lohse G.A. 1967. Zwei neue westeuropaische Arten der Gattung *Lesteva* Latr. *Entomologische Blatter*. 63: 10–12.
- Scheerpeltz O. 1937. Wissenschaftliche Ergebnisse einer von Herrn Hofrat F. Schubert, seinem Sohne Herrn cand. phil. F. Schubert und Herrn Prof. Ing. K. Mandl im Sommer 1935 (1936) nach Bulgarien unternommenen Studienreise. Coleoptera: I. Staphylinidae. *Mitteilungen aus den Koniglichen Naturwissenschaftlichen Instituten*. 10: 185–246.
- Zanetti A. 2008. Description of *Lesteva martinae* nov. sp. from Central Italy (Coleoptera, Staphylinidae: Omaliinae). *Linzer biologische Beitrage*. 40(1): 993–997.